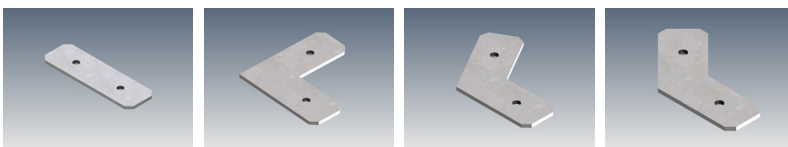


The Where's Ben 14 profile is the perfect solution for wall-washing, ceiling-washing or floor-washing. It creates an even wash of light on to a perpendicular surface meaning it is ideal for lighting art work, or brightening up dark walls or ceilings. Where's Ben 14 can be surface mounted or recessed.

MOUNTING OPTIONS		DIFFUSER OPTIONS		SUPER SERIES LED STRIP OPTIONS			
Surface mounted	Opal	Lumens per metre	Watts per metre	Colour temp.	Lumens per metre	Watts per metre	Colour temp.
Recessed	Clear	270lm	2.6W	2700K	2000lm	17W	2700K
		280lm		3000K	2000lm		3000K
		300lm		4000K	2130lm		4000K
		470lm		2700K	2190lm		2700K
		600lm	5W	3000K	2340lm	20.3W	3000K
		640lm		4000K	2460lm		4000K
		1250lm		2700K			
		1270lm	11W	3000K			
		1400lm		4000K			

- LED strip options vary depending on region – please consult your local distributor for more information. Other LED strip options are available on request, including IP65 and RGBW colour change.
 - All lumen values refer to the bare LED strip. Losses through diffuser/profile are not represented. Consult photometric data.
 - 5 year manufacturer's warranty on Super Series LED strip.

ACCESSORIES



JN-ST-12 Straight joiner JN-90-12 90 degree joiner JN-120-12 120 degree joiner JN-135-12 135 degree joiner

ADDITIONAL INFORMATION

Applications	Wall washing, uplight, lighting for shelving or display units, hallway lighting, lighting signage & art.
Installation	Interior and exterior (with IP65 rated LED strip).
Materials	Extruded aluminium body, polycarbonate diffuser, AES plastic end caps.
Finish	Natural silver anodised or custom powder coat.
Light source	LED ribbon strip.
Power supply	24V DC - remote driver options ranging from 6W up to 320W.
Dimmable	Various options available, please enquire.

