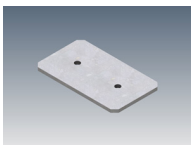


The Downhill Dan 22 extrusion is our most powerful downlighting system. Utilizing two LED strips mounted side-by-side, this profile is ideal for applications where maximum light output is key. A versatile system suitable for various mounting options, Downhill Dan 22 can be surface mounted, recessed and suspended. Both wire and rod suspension options are available for the Downhill Dan 22 extrusion and the recessing systems for plasterboard ceilings and walls create a beautiful trimless finish.

MOUNTING OPTIONS		DIFFUSER OPTIONS		SUPER SERIES LED STRIP OPTIONS			
Surface mounted	Satin	Lumens per metre	Watts per metre	Colour temp.	Lumens per metre	Watts per metre	Colour temp.
Recessed		270lm	2.6W	2700K	2000lm	17W	2700K
Rod suspended	280lm	3000K		2000lm	3000K		
Wire suspended	300lm	4000K		2130lm	4000K		
		470lm	5W	2700K			
		600lm		3000K			
		640lm	11W	4000K			
		1250lm		2700K			
		1270lm		3000K			
		1400lm	4000K				

- LED strip options vary depending on region – please consult your local distributor for more information. Other LED strip options are available on request, including IP65 and RGBW colour change.
- All lumen values refer to the bare LED strip. Losses through diffuser/profile are not represented. Consult photometric data.
- 5 year manufacturer's warranty on Super Series LED strip.

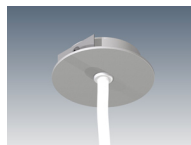
ACCESSORIES



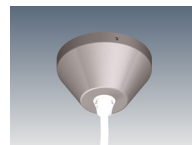
JN-ST-23
Straight joiner



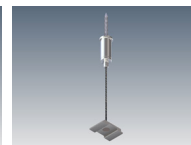
JN-90-23
90 degree joiner



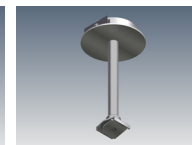
CB-60-R-S / CB-60-R-W
Cable base 60, recessed



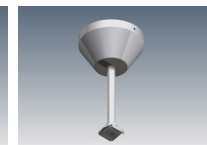
CB-80-SM-S / CB-80-SM-W
Cable base 80, surface mount



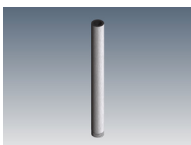
SWK22-1-2M / SWK22-1-4M
Wire suspension



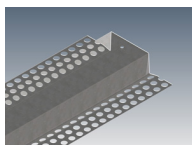
SRK-2-S / SRK-2-W
Rod suspension kit (rod not incl.)



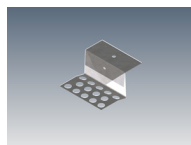
SRK-7-S / SRK-7-W
Rod suspension kit (rod not incl.)



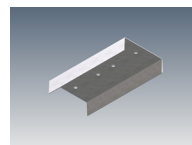
ROD-0.5M / ROD-1M / ROD-2M
Suspension rod - 0.5m, 1m, 2m



C-DD22-I
Recessing cowling



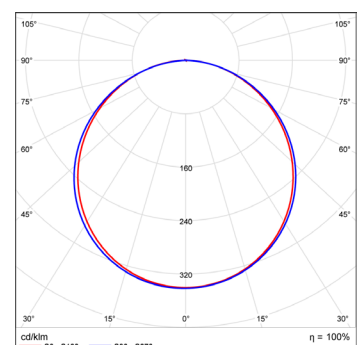
C-DD22-EC-I
Recessing cowling end cap



C-DD22-JN
Recessing cowling joiner

ADDITIONAL INFORMATION

Applications	General downlighting in kitchens, living rooms, dining rooms, reception counters, office spaces.
Installation	Interior or exterior (with IP65 rated LED strip).
Materials	Extruded aluminium body, PMMA diffuser, aluminium end caps.
Finish	Natural silver anodised or custom powder coat.
Light source	LED ribbon strip.
Power supply	24V DC - remote driver options ranging from 6W up to 320W.
Dimmable	Various options available, please enquire.



Polar curve for 2x1340 lumen LED strip with satin diffuser.

