

Timber handrail shown is an example only. Please consult your local distributor for timber profile and material options. Schematic dimensions are based on a 42mm round handrail.

Richie Rail 18 is a unique illuminated handrail system. Hollow wall brackets conceal the power supply to the LED strip, and the low voltage input makes the handrail safe to touch. The innovative sliding wall brackets allow minimal power feeds to the LED strip for simple installation. Richie Rail 18 is suitable for use on residential and commercial stairs and thoroughfares including accessible routes and urban spaces. The profile is designed to be used with various timber profile and timber types.

MOUNTING OPTIONS	DIFFUSER OPTIONS	SPEC SERIES 'SLIM' LED STRIP OPTIONS		
Wall mounted	Opal	Lumens per metre	Watts per metre	Colour temp.
		785lm	9.6W	3000K
		810lm		4000K
		1050lm	14W	3000K
		1080lm		4000K

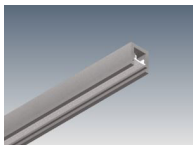
NOTE: Richie Rail 18 is only suitable for use with a maximum 8mm wide PCB LED strip.

- LED strip options vary depending on region – please consult your local distributor for more information. Other LED strip options are available on request.
- All lumen values refer to the bare LED strip. Losses through diffuser/profile are not represented. Consult photometric data.
- 5 year manufacturer's warranty on Spec Series LED strip.

ACCESSORIES



WBRR18-SS
Wall bracket



EX-RR18-MSA
Extrusion



PTBRR18-SS
Post top bracket



PTBRR18-SS-A
Adjustable post top bracket

ADDITIONAL INFORMATION

Applications	Commercial stairs, public stairs, accessible routes.
Installation	Interior only
Materials	316 stainless steel wall bracket, extruded aluminium, polycarbonate diffuser.
Finish	Satin 316 stainless steel wall bracket.
Light source	LED ribbon strip.
Power supply	24V DC - remote driver options ranging from 6W up to 320W.
Dimmable	Various options available, please enquire.



