

Dado Dave 20 is a sleek, architectural profile designed to provide high-output up lighting. The LED strip is positioned to maximise asymmetric distribution which offers smooth light out into the space. The concealed light source keeps glare to a minimum, while up to 2460lm per metre LED strip means it packs a punch. The extrusion is designed for super-quick screw-fixing, while a clip-in aluminium lid covers the screw heads and provides a smooth, easy-to-clean surface. For applications where Dado Dave 20 is being mounted flush with the bottom of a bulkhead, then the mounting adaptor can be used to reverse the direction of the mounting screw.

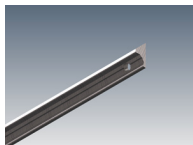
MOUNTING OPTIONS		DIFFUSER OPTIONS		SUPER SERIES LED STRIP OPTIONS			
Surface mounted	Opal	Lumens per metre	Watts per metre	Colour temp.	Lumens per metre	Watts per metre	Colour temp.
	Clear	270lm	2.6W	2700K	2000lm	17W	2700K
		280lm		3000K	2000lm		3000K
		300lm		4000K	2130lm		4000K
		470lm		2700K	2190lm		2700K
		600lm	5W	3000K	2340lm	20.3W	3000K
		640lm		4000K	2460lm		4000K
		1250lm		2700K			
		1270lm	11W	3000K			
		1400lm		4000K			

- LED strip options vary depending on region – please consult your local distributor for more information. Other LED strip options are available on request, including IP65 and RGBW colour change.
- All lumen values refer to the bare LED strip. Losses through diffuser/profile are not represented. Consult photometric data.
- 5 year manufacturer's warranty on Super Series LED strip.

ACCESSORIES



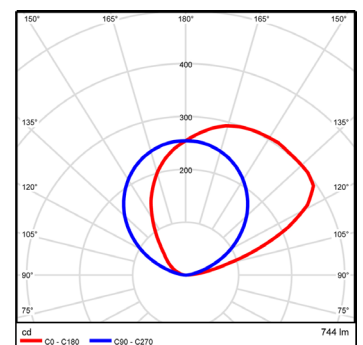
JN-LOC
Joiner locator



MA-4M
Bulkhead mounting adaptor

ADDITIONAL INFORMATION

Applications	Concealed indirect lighting for living rooms, board rooms, hallways.
Installation	Interior only.
Materials	Extruded aluminium body, polycarbonate diffuser, aluminium end caps.
Finish	Natural silver anodised or custom powder coat.
Light source	LED ribbon strip.
Power supply	24V DC - remote driver options ranging from 6W up to 320W.
Dimmable	Various options available, please enquire.



Polar curve for 1890 lumen LED strip with clear diffuser.

