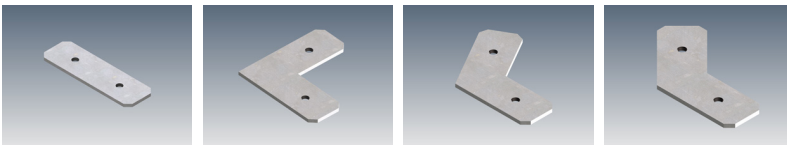


The Where's Ben 25 profile is a Fully Integrated Architectural, "dot-free" lighting solution. Designed to be recessed into the corner of perpendicular walls or into the corner of a wall and ceiling, Where's Ben 25 offers a unique and subtle architectural detail.

MOUNTING OPTIONS		DIFFUSER OPTIONS		SUPER SERIES LED STRIP OPTIONS			SUPER SERIES LED STRIP OPTIONS		
Surface mounted	Opal	Lumens per metre	Watts per metre	Colour temp.	Lumens per metre	Watts per metre	Colour temp.		
Recessed	Clear	270lm		2700K	2000lm		2700K		
		280lm	2.6W	3000K	2000lm	17W	3000K		
		300lm		4000K	2130lm		4000K		
		470lm		2700K					
		600lm	5W	3000K					
		640lm		4000K					
		1250lm		2700K					
		1270lm	11W	3000K					
		1400lm		4000K					

- LED strip options vary depending on region – please consult your local distributor for more information. Other LED strip options are available on request, including IP65 and RGBW colour change.
- All lumen values refer to the bare LED strip. Losses through diffuser/profile are not represented. Consult photometric data.
- 5 year manufacturer's warranty on Super Series LED strip.

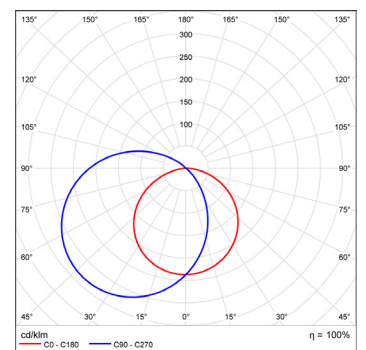
ACCESSORIES



JN-ST-12 Straight joiner JN-90-12 90 degree joiner JN-120-12 120 degree joiner JN-135-12 135 degree joiner

ADDITIONAL INFORMATION

Applications	Hallways, bathrooms, mirror lighting.
Installation	Interior and exterior (with IP65 rated LED strip).
Materials	Extruded aluminium body, polycarbonate diffuser, AES plastic end caps.
Finish	Natural silver anodised or custom powder coat.
Light source	LED ribbon strip.
Power supply	24V DC - remote driver options ranging from 6W up to 320W.
Dimmable	Various options available, please enquire.



Polar curve for 1890 lumen LED strip with opal diffuser.

