

Trimless Tim 15 is designed to recess seamlessly into joinery to offer dot-free lighting solutions. The small ribs either side of the profile allow Trimless Tim 15 to be friction-fitted into an 18mm routed slot in joinery without the need for screws. The flat diffuser provides an excellent, flush, high-level finish to the installation.

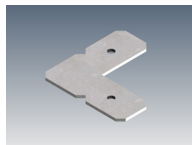
MOUNTING OPTIONS	DIFFUSER OPTIONS	SUPER SERIES LED STRIP OPTIONS		
Recessed	Opal	Lumens per metre	Watts per metre	Colour temp.
	Clear	270lm		2700K
		280lm	2.6W	3000K
		300lm		4000K
		470lm		2700K
		600lm	5W	3000K
		640lm		4000K
		1250lm		2700K
		1270lm	11W	3000K
		1400lm		4000K

- LED strip options vary depending on region – please consult your local distributor for more information. Other LED strip options are available on request, including IP65 and RGBW colour change.  
- All lumen values refer to the bare LED strip. Losses through diffuser/profile are not represented. Consult photometric data.  
- 5 year manufacturer's warranty on Super Series LED strip.

## ACCESSORIES



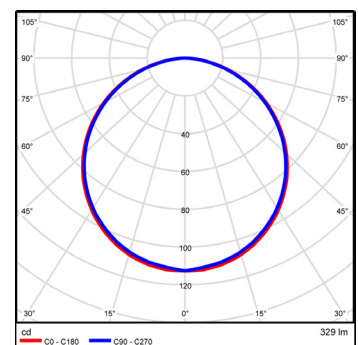
JN-ST  
Straight joiner



JN-90  
90 degree joiner

## ADDITIONAL INFORMATION

Applications	Task lighting in kitchen cabinetry, lighting for shelving or display units.
Installation	Interior and exterior (with IP65 rated LED strip).
Materials	Extruded aluminium body, polycarbonate diffuser, AES plastic end caps.
Finish	Natural silver anodised or custom powder coat.
Light source	LED ribbon strip.
Power supply	24V DC - remote driver options ranging from 6W up to 320W.
Dimmable	Various options available, please enquire.



Polar curve for 1340 lumen LED strip with opal diffuser.



CANVAS

303

VIDAK

our work

VIDAK  
LIVING SOLUTIONS